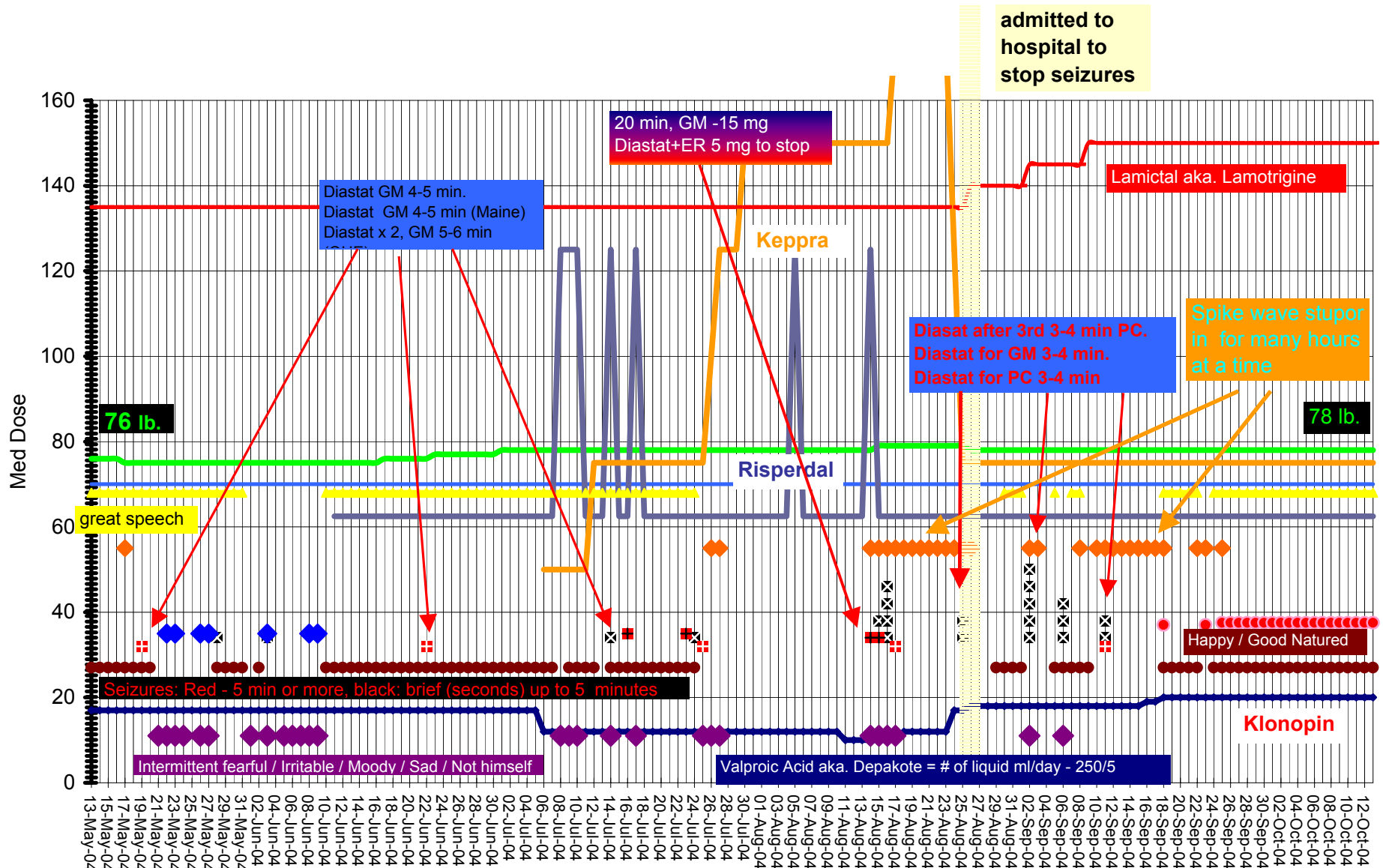


# Christian's Med Change-Behavior Chart May 13, 2004 - October 12, 2004



- |                         |                             |                          |                         |                         |
|-------------------------|-----------------------------|--------------------------|-------------------------|-------------------------|
| —●— Valproic ml/day     | —◆— Neurontin X100/day      | ⊠ Seizures Minor 5< min. | ■ Seizures > 5 min.     | ● Happy                 |
| ● Gaggy                 | ◆ V. Irritable              | ◆ Spike Wave Stupor      | ◆ Irr/Agg/Moody/Sad     | —●— Lamictal            |
| —◆— Weight              | —◆— Great Speech            | —■— Additional seizures  | —●— Klonopin            | —●— Rage Attack         |
| —■— Illness-non-routine | —◆— Carnitine               | —◆— Seizures 5< min. #2  | —◆— Seizures 5< min. #3 | —◆— Seizures 5< min. #4 |
| —⊠— Seizures 5< min. #5 | —◆— Risperdal 1/1 (.25)*180 | —◆— Keppra               |                         |                         |