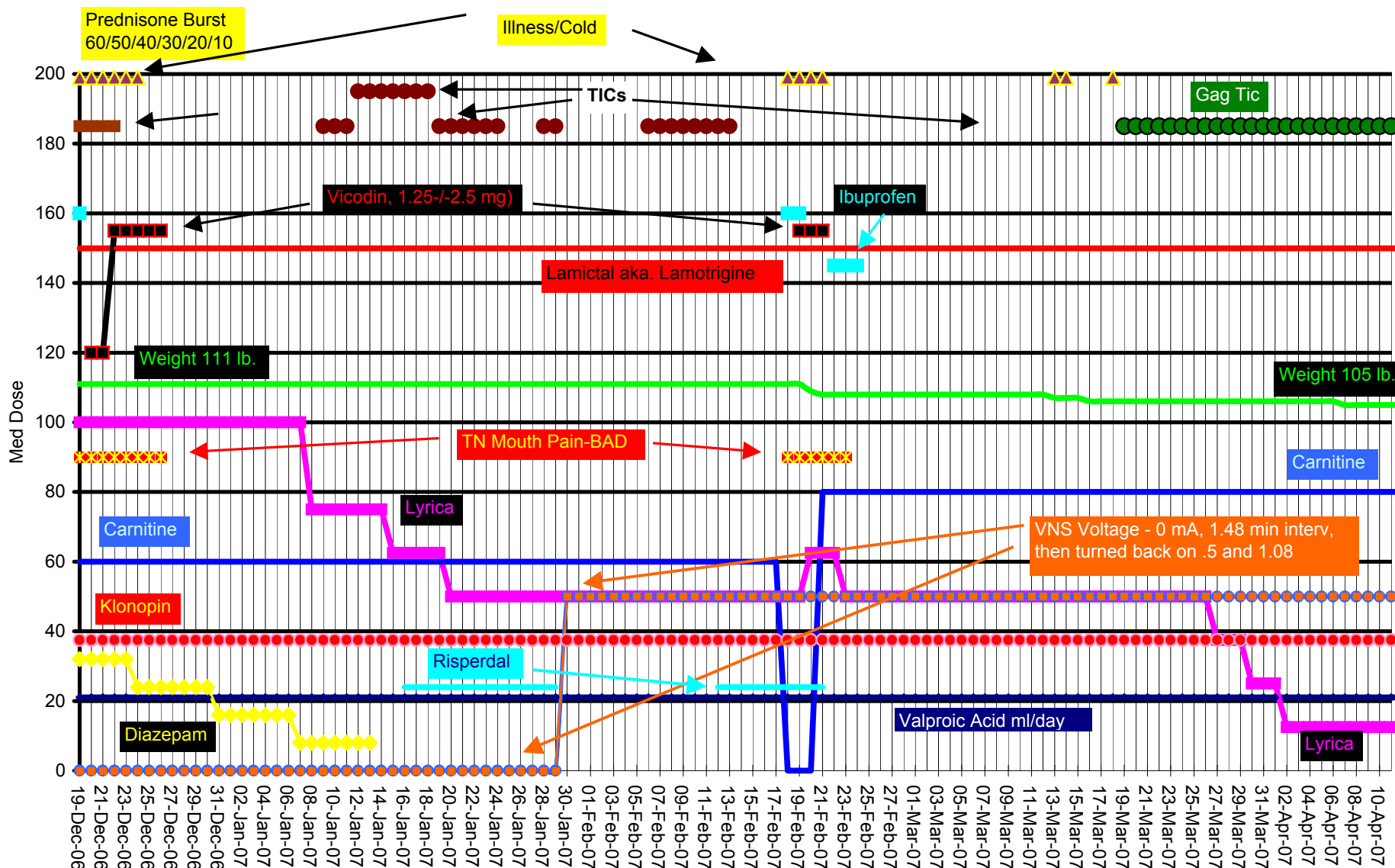


Christian's Med Change-Behavior Chart December 19, 2006 to April 11, 2007



- | | | | | |
|--|--|---|---|--|
| <ul style="list-style-type: none"> — Valproic ml/day ● Gaggy — Weight ⊠ Mouth Pain ⊠ Seizures 5< min. #5 — IBPrufen | <ul style="list-style-type: none"> — Neurontin X100/day ◆ V.Irritable — Great Speech — Carnitine — Risperdal 1/1 (.25)*180 — Vicodin | <ul style="list-style-type: none"> ⊠ Seizures Minor 5< min. ◆ Spike Wave Stupor — Additional seizures ⊠ Seizures 5< min. #2 — Keppra ◆ Diazepam | <ul style="list-style-type: none"> ⊠ Seizures > 5 min. ◆ Irr/Agg/Moody/Sad — Klonopin ⊠ Seizures 5< min. #3 — VNS mA * 100 — Lyrica — Daytrana Patch | <ul style="list-style-type: none"> ● TICs — Lamictal — Rage Attack ⊠ Seizures 5< min. #4 — Illness |
|--|--|---|---|--|